

# Cottonseed Outlook



Ben Morgan

America Cotton Linter Association Meeting

Tunica, Mississippi

October 7-9, 2009

# Cottonseed Oil PR Campaign



# Cottonseed Oil PR Campaign



## Cottonseed Oil PR Campaign

- Food Technology magazine: “Separating Fats from Fiction” – September 2009
- Cotton Grower magazine – September 2009
- Mid-South Farmer magazine – August 2009
- Oil Mill Gazetteer – July 2009
- Ag Media Summit – August 2009

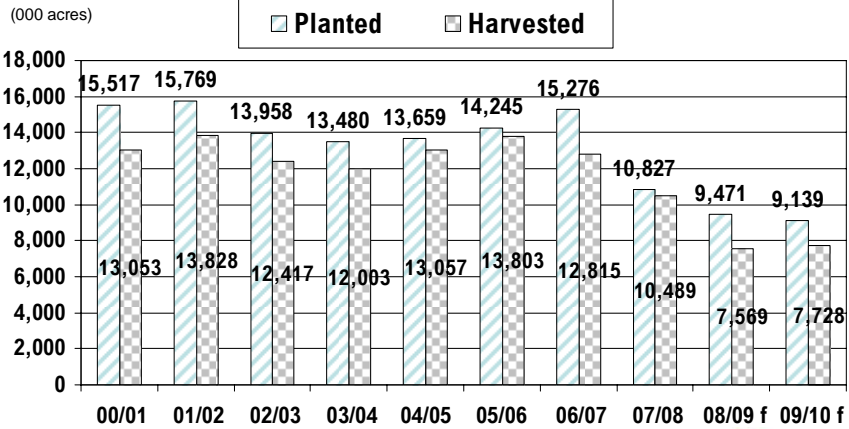


## Ag Media Summit

- Cotton Farming
- Cotton Grower
- High Plains Journal
- Progressive Farmer/DTN
- Successful Farming
- The Farmer Stockman (Farm Progress, TX)
- Mid-South Farmer (Farm Progress)
- Southwest Farm Press
- Southeast Farm Press
- Delta Farm Press
- Western Farm Press
- Mid-America Farmer Grower
- ZimmComm, Ag Wired
- Fort Worth Star Telegram

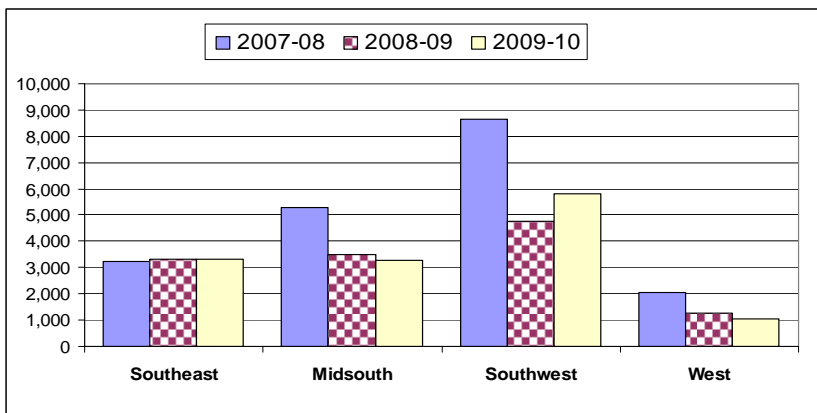
# 2009/10 Cotton Outlook

(USDA, Sep. 2009 est.)



# 2009/10 Cotton Forecast

(000 bales, USDA, Sep. 2009 est.)

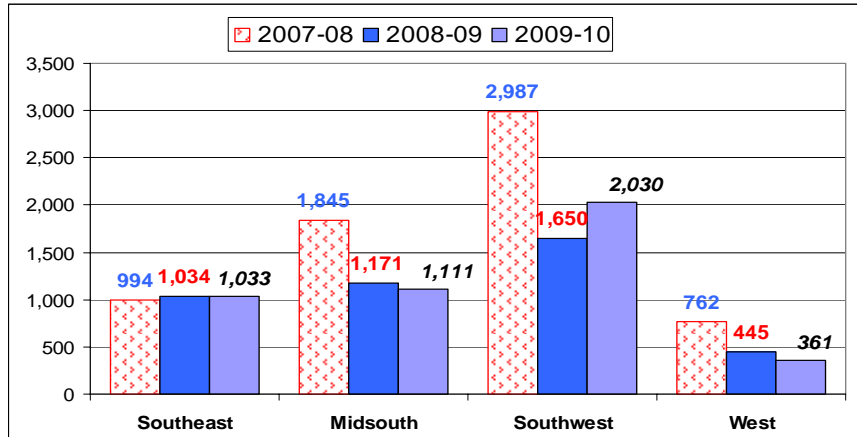


19.2 mill bales 07/08; 12.8 mill bales 08/09; 13.4 mill bales 09/10



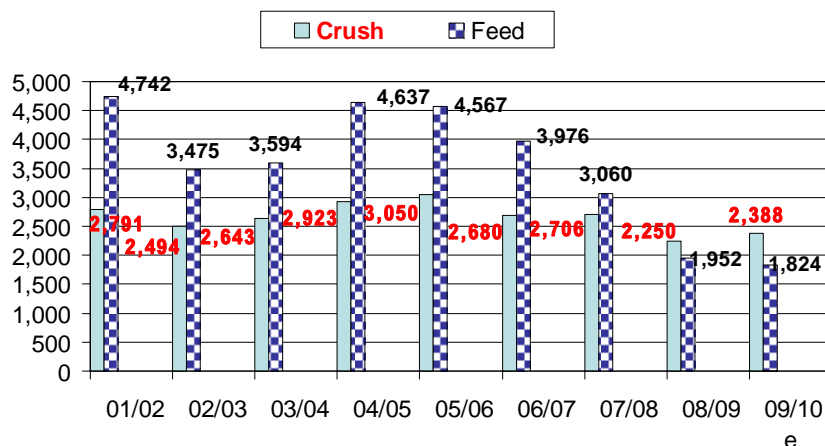
# 2009/10 Cottonseed Forecast

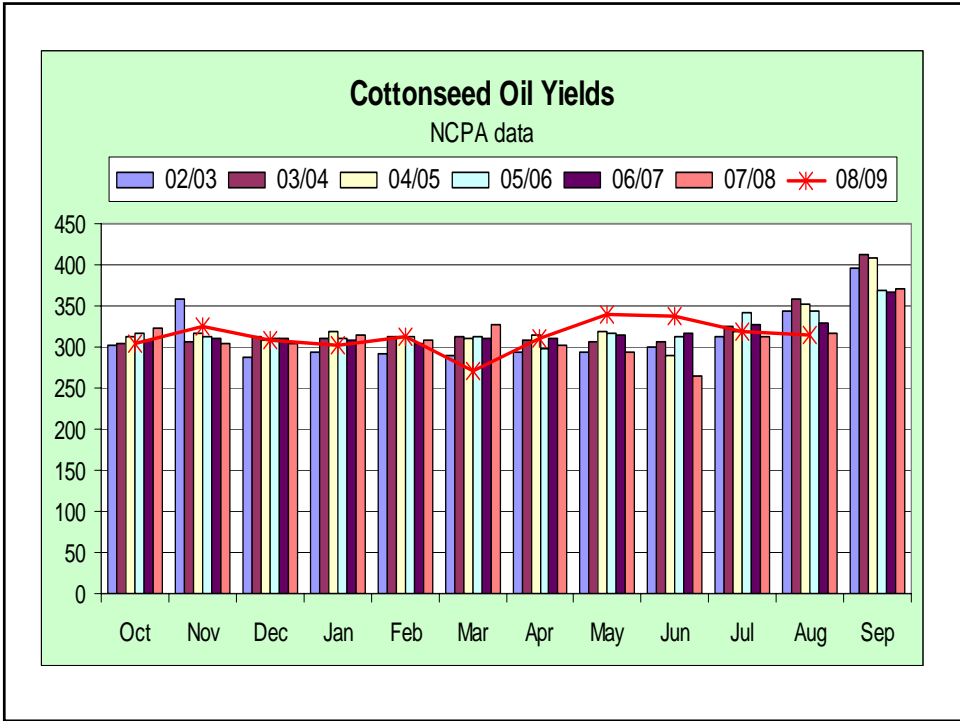
(000 tons, USDA, Sep. 2009 est.)



# Cottonseed Crush & Fed

(000 tons, USDA, Sep. 2009 est.)





## Cottonseed Production - SE

	08/09	09/10 f	Yields
AL	139	140	667
FL	33	39	561
GA	508	561	607
NC	231	199	627
SC	88	53	648
VA	35	40	662
<b>Southeast</b>	<b>1,034</b>	<b>1,033</b>	

## Cottonseed Production - MS

	08/09	09/10 f	Yields
AR	443	380	691
LA	89	130	643
MS	230	197	692
MO	240	221	713
TN	169	183	653
Midsouth	1,171	1,111	

## Cottonseed Production - SW

	08/09	09/10 f	Yields
KS	13	18	739
OK	91	122	719
TX	1,547	1,890	696
Southwest	1,650	2,030	

## Cottonseed Production - West

	08/09	09/10 f	Yields
AZ	140	151	715
CA	280	188	737
NM	25	22	691
West	445	361	

## Cottonseed Production - US

	08/09	09/10 f	
Southeast	1,034	1,033	
Mid-south	1,171	1,111	
Southwest	1,650	2,030	
West	445	361	
US	4,300	4,535	



## Cottonseed Supply

(Aug-Jul marketing year; 000 tons, USDA: Sep. 2009 est)

	USDA	NCPA
Beginning Stocks – Aug 1	488	619
Production	4,535	4,535
Imports	0	0
<b>Total Supply</b>	<b>5,023</b>	<b>5,154</b>



## Cottonseed Disappearance

(Aug-Jul marketing year; 000 tons, USDA: Sep. 2009 est)

	USDA	NCPA
Crush	2,388	2,200
Exports	350	350
Planting	61	61
Feed & Other	1,824	1,900
<b>Total Use</b>	<b>4,623</b>	<b>4,511</b>
End Stocks	400	643

